



## **Drive Systems from SEW-EURODRIVE**

Mining Industry



## We drive the mining industry

... Global Availability

... Local Support

... Proven Reliability

... Innovative Solutions

SEW-EURODRIVE has earned a reputation worldwide for rugged and reliable gear units. With 9 assembly plants in North America, we are very equipped to service the mining industry with our proven industrial gear units.

Our North American headquarters in Lyman, South Carolina, assembles and stocks components for both helical and helical-bevel gear units up to 1,550,000 lb-in.

The South Carolina facility also assembles, services, and stocks components for gear units up to 4,440,000 lb-in.

Companies around the world rely on SEW-EURODRIVE for quality German engineering. We have been fulfilling that reputation for more than 80 years.

### Additional services and benefits include:

- Training
- Plant surveys
- Commissioning
- Energy calculations
- Base plate design and manufacture
- Alignment of equipment
- Fitment of customer supplied parts
- Service



### Machines and applications — Proven reliability for all mining sites

- Conveyor drives
- Reclaimers
- Stackers
- Apron feeders
- Slurry pumps
- Screening processors / shakers
- Extractor fans
- Wet and dry cooling towers
- Fans
- Elevators
- Crushers
- Dredgers
- Bucket chain elevators
- Slewing drives
- Lifting devices
- Hoisting machinery
- Travel drives
- Mixers
- Thickeners

The “Mining Drive” offers higher efficiency and lower operating temperatures



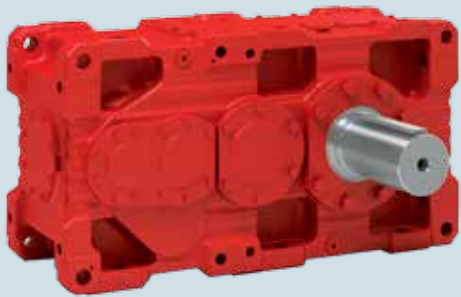
## Industrial Gear Units

### ... Custom is our Standard

Available as a stand-alone gear unit or integrated into a complete drive package containing base and accessories, our industrial gear units perform under difficult conditions and provide movement wherever high torque and maximum reliability are required.

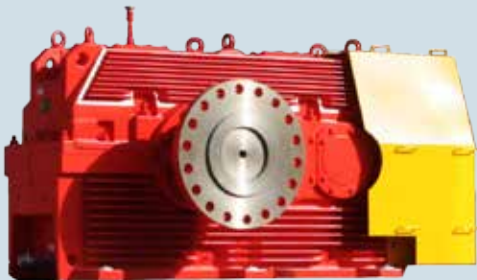
With a wide selection of industrial gear types, we offer extremely large output torques to handle a huge sector of demanding applications.

Furthermore, since our industrial gear units are designed using a modular concept, we are able to offer considerable customization using standard parts.



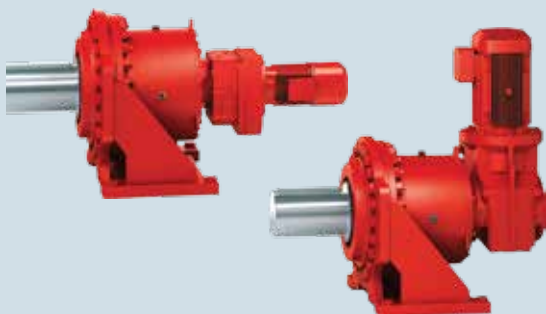
#### X-Series

- Robust housing
- Reduced cost - 23 sizes prevents oversizing
- Reduced weight - high power density
- Reversible - can be inverted for either right-hand or left-hand shaft
- Innovative, patented cooling systems
- Torque: 513,000 - 4,204,000 lb-in
- Flexible mounting
- Helical or helical-bevel
- Worldwide service
- Local stock and assembly



#### Mining Drive

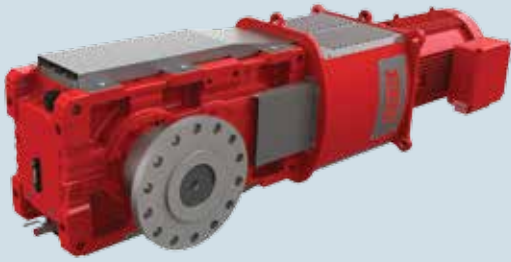
- Helical or helical-bevel gear units
- Designed for increased thermal rating
- Reduced energy consumption
- Horizontal split housings
- Low running temperature
- Long oil life
- Safe-touch surface
- Torque: 513,000 - 4,204,000 lb-in



#### P-Series

- High torque
- Very compact
- High torsional rigidity
- Helical or helical-bevel gearmotor integrated on the input
- Very wide selection of total gear ratio
- Local stocking and assembly
- Torque: to 4,425,000 lb-in





### XMiner

- Complete drive package of the X series
- Available in 16 sizes
- Torque range: 60,200 to 1,549,000 lb-in
- Innovative/patented cooling system
- Alignment-free with tunnel housing
- Reversible housing
- Taconite heavy duty sealing system with labyrinth path
- Local assembly in South Carolina



### Integrated drive packages

- Complete package: gear unit, coupling, motor, drive base, guard
- SEW-Eurodrive engineered steel drive base
- Laser aligned components
- “One Stop Shop”: One order, one responsibility



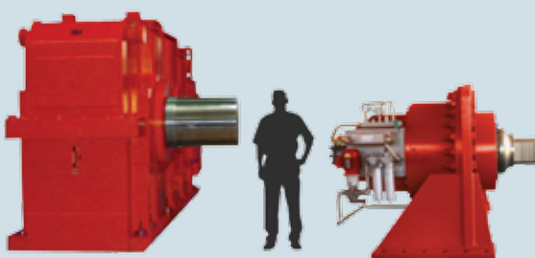
### MC Compact Series

- Compact helical or helical-bevel gear units
- Available in eight sizes
- Torque range: 53,100 – 570,000 lb-in
- Local assembly in South Carolina
- Optional pressure lubrication
- Regional inventory availability



### EBD – Extended Bearing Distance

- Mixer and Agitator Drive using MC Series
- Extended bottom bearing housing
- Higher capacity bearings
- Optional larger diameter output shaft
- Increased axial or radial loads
- Increased strength and rigidity
- Agitators, mixers, aerators, dry-cooling towers, or thickeners
- Optional drywell sealing system to prevent oil leakage at the output shaft in vertical mounting positions
- Torque: to 570,000 lb-in



### Customized IG & XP Planetary

- Custom gear units up to 60 tons
- Torque: to 44,250,000 lb-in
- Helical, helical-bevel, torque split, and planetary type units
- Extra heavy-duty for mining, sugar, and industrial applications
- Housing sizes up to 15 ft long, 9 ft high
- All components made in-house
- Factory load testing before dispatch available

## Standard 7-series Gear Units / Gearmotors

7-series gear units and gearmotors from SEW-EURODRIVE are available in numerous sizes and ratios. Although the torque is low compared to industrial gear units, the torque density is high for their smaller, compact size. A rigid, single piece housing prevents the load pressure from being transferred to the sealing surface. The result: a longer service life with less chance of leakage.



### **RX and R Series: Helical Inline**

- Torque: 440 to 159,300 lb-in
- Power: 0.125 to 250 HP
- 6 sizes (1-stage)
- 13 sizes (2-stage or 3-stage)
- 95-97% efficient
- Flange mount with extended bearing housing for agitators
- Foot or flange-mounted
- Metric or inch solid shafts



### **F series: Slim Helical Parallel**

- Very slim design - use where space is limited
- Torque: 770 to 159,300 lb-in
- Power: 0.125 to 300 HP
- 11 sizes
- 95-97% efficient
- Foot mounted
- B5 or B14 flange mounted
- Solid or hollow shaft
- Hollow shaft designs: with key, keyless shrink disc, or keyless TorqLOC® with taper
- Metric or inch shafts



### **K series: Helical-bevel Right angle**

- Torque: 1100 to 442,500 lb-in
- Power: 0.125 to 300 HP
- 12 sizes
- 95-97%
- Foot or flange-mounted
- B5 or B14 flange-mounted
- Solid or hollow shaft
- Hollow shaft designs: with key, keyless shrink disc, or keyless TorqLOC® with taper
- Metric or inch shafts

## Frequency Inverters

Select from the Movitrac® Basic or the more advanced Movitrac® Standard.

... Powerful Features

... Simple Startup

... Easy to Use



### MOVITRAC® LTE B - Basic

- Single or 3-phase
- IP20 or IP66 enclosure
- 40 configurable parameters
- Small physical size
- Powerful features
- Integrated key-pad
- Parameter module for data transfer
- Power: 0.5 to 15 HP



### MOVITRAC® LTP - Standard

- Single or 3-phase
- IP20 enclosure
- 74 parameters
- VFC mode\*\*
- Simple installation and operation
- Integrated key-pad and RFI filters
- Built-in PID controller for feedback systems
- Fieldbus expandable via gateway
- 100% torque @ 0 speed (no encoder)
- Torque control
- RS485 based Internal Bus
- IR and RJ11 interface
- Power: 1.0 to 220 HP

\*\* VFC mode contains vector flux technology that will optimize the motor efficiency no matter how small the load.





**SEW-EURODRIVE**  
Driving the world

## SEW-EURODRIVE – Wherever you are, we are

### North America:

**Midwest Region  
Assembly Center  
SEW-Eurodrive, Inc.**  
Troy, OH 45373  
Tel. (937) 335-0036  
Fax (937) 332-0038  
cstroy@seweurodrive.com

**Northeast Region  
Assembly Center  
SEW-Eurodrive, Inc.**  
Bridgeport, NJ 08014  
Tel. (856) 467-2277  
Fax (856) 845-3179  
csbridgeport@seweurodrive.com

**Southeast Region  
Assembly Center  
SEW-Eurodrive, Inc.**  
Lyman, SC 29365  
Tel. (864) 439-7537  
Fax (864) 439-7830  
cslyman@seweurodrive.com

**Southwest Region  
Assembly Center  
SEW-Eurodrive, Inc.**  
Dallas, TX 75237  
Tel. (214) 330-4824  
Fax (214) 330-4724  
csdallas@seweurodrive.com

**Western Region  
Assembly Center  
SEW-Eurodrive, Inc.**  
Hayward, CA 94544  
Tel. (510) 487-3560  
Fax (510) 487-6433  
cshayward@seweurodrive.com

**Mexico  
SEW-Eurodrive Sales and  
Distribution SA de CV**  
Queretaro, Mexico  
Tel. (011) 52-442-103-0300  
Fax (011) 52-442-103-0301  
scmexico@seweurodrive.com.mx

**Canada  
SEW-Eurodrive Co.  
of Canada Ltd.**  
Bramalea, Ontario  
Tel. (905) 791-1553  
Fax (905) 791-2999  
marketing@sew-eurodrive.ca

**Canada  
SEW-Eurodrive Co.  
of Canada Ltd.**  
Delta, B.C.  
Tel. (604) 946-5535  
Fax (604) 946-2513  
marketing@sew-eurodrive.ca

**Canada  
SEW-Eurodrive Co.  
of Canada Ltd.**  
LaSalle, Quebec  
Tel. (514) 367-1124  
Fax (514) 367-3677  
marketing@sew-eurodrive.ca

**SEW  
EURODRIVE**

www.seweurodrive.com (U.S.)  
www.sew-eurodrive.ca (Canada)  
www.mx.sew-eurodrive.com (Mexico)