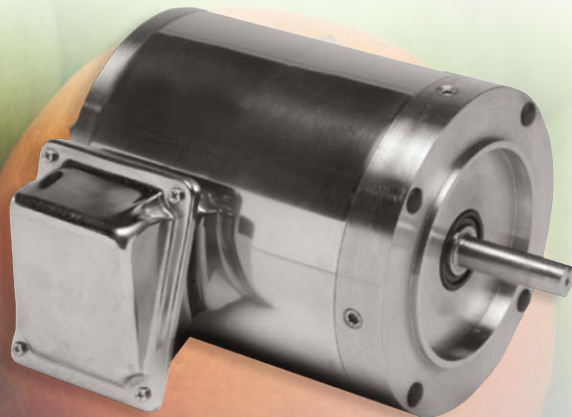




Ultimate Food Processing and Washdown Solutions



A Regal Brand

REGAL

We have a tasteful solution for

Stainless Steel HERA® Gear Drives

Featuring:

- » Smooth Cast Surface Finish
- » 90% Efficiency
- » Up to 2x Torque density of worm speed reducers
- » Power Ratings to 8.5HP and ratios to 60/1 (nominal)
- » No-Hassle Bolt-in replacement of major brands of worm speed reducers
- » Factory Filled with USDA H1 Lubricant for Application Service Life of the Drive
- » High Pressure Dual Lip Seals Configured for Severe High Pressure & Chemical Washdown Environments
- » 316 Stainless Steel Housings
- » HACCP Compatible & BISSC Certified
- » Packaged with Marathon PowerWash SXT All-Stainless Motors



Stainless Steel Helical Bevel Gear Drives

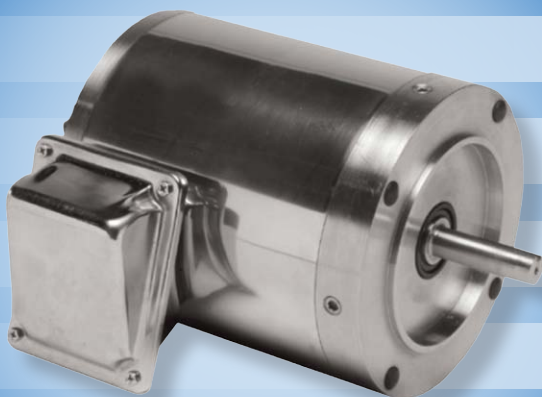
Featuring:

- » Smooth Cast Surface Finish
- » 93 to 95% Efficient
- » Power Ratings to 20HP and ratios to 138/1 (nominal)
- » Factory Filled with USDA H1 Lubricant for Application Service Life of the Drive
- » High Pressure Dual Lip Seals Configured for Severe High Pressure & Chemical Washdown Environments
- » 316 Stainless Steel Housings
- » HACCP Compatible & BISSC Certified
- » Packaged with Marathon PowerWash SXT All-Stainless Motors

POWERWASH SXT by Marathon Motors

Featuring:

- » All stainless steel, totally enclosed
- » Power Ratings to 3HP
- » 300 Series stainless steel external construction: frame, endshields, conduit box, mounting base and hardware for superior corrosion resistance
- » 100% paint-free construction
- » Nameplate information laser etched on frame
- » UL Recognized, CSA Certified and CE Mark



whatever may be on your plate.

Stainless Steel Helical Inline Gear Drives

Featuring:

- » Smooth Cast Surface Finish
- » 93 to 95% Efficient
- » Power Ratings to 18HP and ratios to 50/1 (nominal)
- » Factory Filled with USDA H1 Lubricant for Application Service Life of the Drive
- » High Pressure Dual Lip Seals Configured for Severe High Pressure & Chemical Washdown Environments
- » 316 Stainless Steel Housings
- » HACCP Compatible & BISSC Certified
- » Packaged with Marathon PowerWash SXT All-Stainless Motors



Hub³® Stainless Steel Worm Gear Drives

Featuring:

- » Advanced design
- » Now available in seven sizes
- » Power Ratings to 14HP and ratios to 100/1
- » Polished 316 Stainless Steel housings with rounded caps and covers for easy cleanability
- » 303 Stainless Steel output shafts and sleeves
- » Food grade synthetic lubricant, USDA class H1
- » Dual bolt patterns top and bottom mounting surfaces for universal mounting capability
- » Available in solid output and hollow bore designs
- » Available accessories include base kits, side mounting flange kits, and output cover kits



Hub³® Stainless Steel Bevel Gear Drives

Featuring:

- » Smooth Machined or polished cast housing surface
- » Power Ratings to 50HP and ratios to 3/1
- » Designed to be Compliant with NSF/ANSI/3-A 14159-1—2002
- » Factory Filled with USDA H1 Lubricant
- » High Pressure Dual Lip Seals
- » 316 Series Stainless Steel Housings
- » HACCP Compatible & BISSC Certified





Stainless Steel Helical Ratio Multiplier

Available in NEMA 56C or 140TC input and output configurations. Ideal for use between a stainless steel motor and a C-face stainless steel gear drive to gain needed additional gear reduction.

- » 97% Efficiency
- » Power Ratings to 4.6HP and Ratios to 7/1 (nominal)
- » Polished 316 Stainless Steel Housings with rounded caps and covers for easy cleanability
- » Food grade synthetic lubricant, USDA class H1



CleanLine Plus Modified and Custom Drives

Featuring:

- » Designs Tailored to Your Specifications
- » Meeting Unique Application Needs
- » Special Fabrications
- » Corrosion Resistant Treatments such as Powder or Stainless Steel Paint



CleanLine Ultraplus Stainless Steel & Thermoplastic Composite Mounted Bearings & HubFlex Couplings

Featuring:

- » 304 Stainless Steel Housings or Ultradur®
- » Glass Reinforced PBT Thermoplastic Housings
- » 440 Stainless Steel Rings and Balls
- » 302 Stainless Steel Flingers and Retainers
- » Factory Filled with USDA H1 Lubricant
- » Stainless steel housings are machine polished to NSF/3-A or Industry Approved Standards
- » Bore Sizes Up to 1.9375"
- » HACCP Compatible
- » Stainless Steel HubFlex Couplings with food grade inserts



2914 Industrial Avenue
 Aberdeen, SD 57402 USA
 Ph: 605-225-0360
 Fax: 605-225-0567
 Email: hubsales@regalbeloit.com

www.hubcityinc.com

A Regal Brand

